



WISE TIDE II as shown, DESOTO TIDE similar

GPA 670 PLATFORM SUPPLY VESSEL

Vessel Characteristics

Length, Overall:	240.2 ft	73.2 m
Beam:	54.1 ft	16.5 m
Depth:	22.3 ft	6.8 m
Maximum Draft:	18 ft	5.5 m
Light Draft:	8.5 ft	2.6 m
Minimum Height:	82.3 ft	25.1 m
Freeboard:	4.3 ft	1.3 m
Displacement:	4,930 lt	5,010 mt
Deadweight:	2,970 lt	3,020 mt
Clear Deck Space:	162 x 45 ft	49 x 14 m
Clear Deck Area:	7,210 ft ²	670 m ²
Deck Strength AFT:	1,020 lb/ft ²	5 t/m ²
Class Notations:	ABS: +A1, (E), OSV, FFV-1, +AMS, +DPS-2, +ACCU	

Capacities

Deck Cargo:	1,570 lt	1,600 t
Fuel Oil:	269,000 gal	1,020 m ³
Potable Water:	26,800 gal	100 m ³
Fresh Water:	185,000 gal	700 m ³
Drill/Ballast Water:	103,000 gal	390 m ³
Bulk Tanks (4 tanks):	9,000 ft ³	250 m ³
Liquid Mud (2.5 SG*):	6,810 bbl	1,080 m ³
<small>*Max Structural Specific Gravity</small>		
Base Oil:	1,250 bbl	200 m ³
Oil Dispersant:	5,100 gal	19.3 m ³
Fire Fighting Foam:	5,100 gal	19.3 m ³

TIDEWATER

Find out more

tdw.com

Pg.2 Further Specifications

Pg.4 Capacity Table

Pg.3 General Arrangement

Pg.5 DP Capability Plot



Machinery

Diesel Electric Vessel			
<i>Propulsive/Total HP:</i>	5,150 / 7,340		
Z-Drives:	Yes		
Propellers (2):	2 x 2574 HP		
Primary Generators (3):	1,820 kw	440 v	60 hz
<i>Driven by:</i>	CUMMINS QSK 60		
Emergency Generators (1):	250 kw	440 v	60 hz
<i>Driven by:</i>	CAT C9		
Bow Thruster (2):	CPP 4-Blade Tunnel		
<i>Driven by:</i>	Electric Motor (746KW ea.)		
Total Thrust:	25 st	22.7 mt	

Deck Equipment

Anchors (2):	5,424 LBS STOCKLESS TYPE
Anchor Chain:	220 m of 38 mm chain per side
Crane (1):	2 t @ 15.8 m
Capstans (2):	8 t ELECTRO-HYDRAULIC PLIMSOLL (14M/MIN)
Tugger (1):	10 t PLIMSOLL (14M/MIN)

Accommodations

No. of Berths:	23
Cabins:	5x1-man, 5x2-man & 2x4-man
Certified to Carry:	23
Galley seating:	22
Hospital:	Yes

Registration

Flag: LIBERIA	Home Port: MONROVIA	
Hull Number: 167	IMO N^o: 9538505	
Year Built: 2009	Call Sign: 5LRE9	
Builder:	ZHEJIANG SHIPBUILDING	
Tonnage (ITC):	2308 GT	852 NT

Performance*

Fuel Consumption Vs Speed		
<i>Maximum:</i>	19.5 m ³ /day (210 gph) @ 12 knots	
<i>Cruising:</i>	14 m ³ /day (150 gph) @ 10 knots	
<i>Economical:</i>	9.6 m ³ /day (110 gph) @ 8 knots	
<i>Standby:</i>	0.6 m ³ /day (6.1 gph) @ 0 knots	
Range @ 10 Knots:	17,500 nm	
Transfer Rates		
<i>Fuel Oil:</i>	660 gpm @ 300 ft	150 m ³ /h @ 92 m
<i>Fresh Water:</i>	660 gpm @ 300 ft	150 m ³ /h @ 92 m
<i>Drill/Ballast Water:</i>	660 gpm @ 300 ft	150 m ³ /h @ 92 m
<i>Bulk:</i>	37.5 cfm @ 200 ft	63.7 m ³ /h @ 61 m
<i>Liquid Mud:</i>	330 gpm @ 500 ft	75 m ³ /h @ 150 m
<i>Base Oil:</i>	660 gpm @ 300 ft	150 m ³ /h @ 92 m

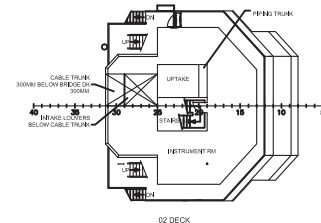
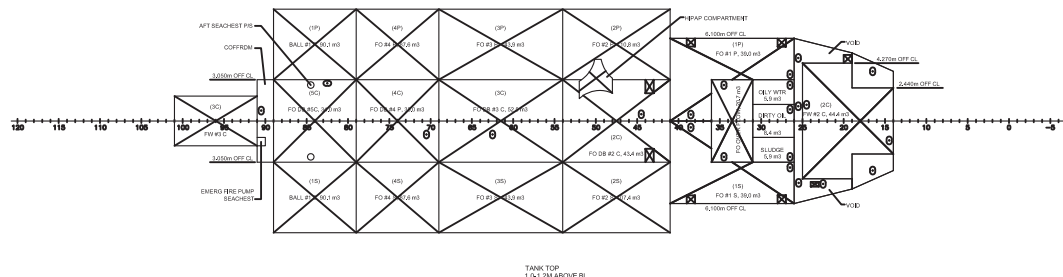
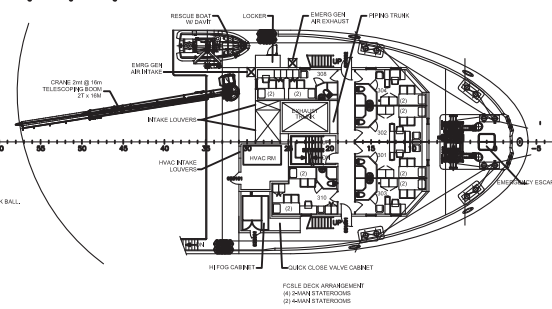
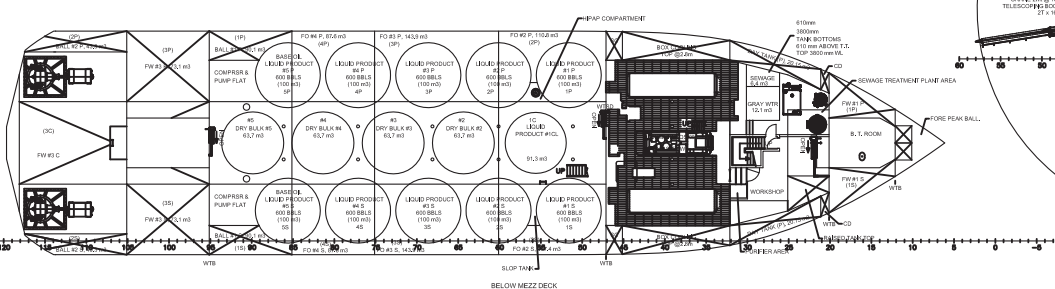
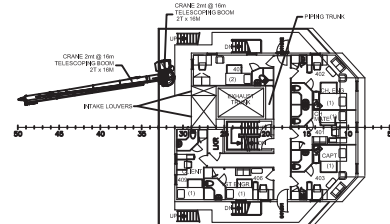
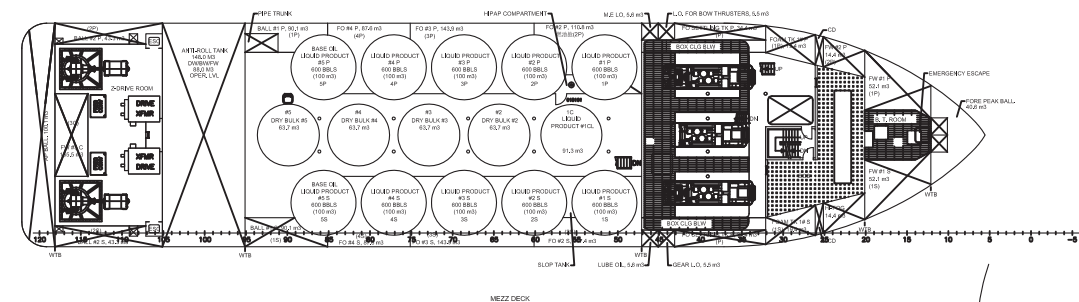
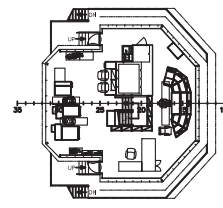
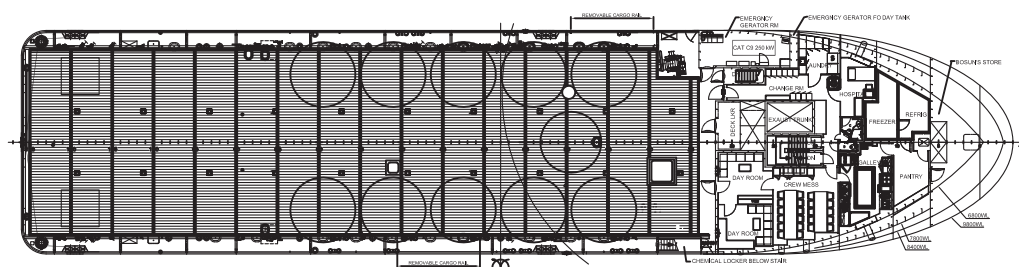
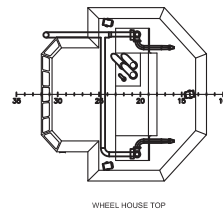
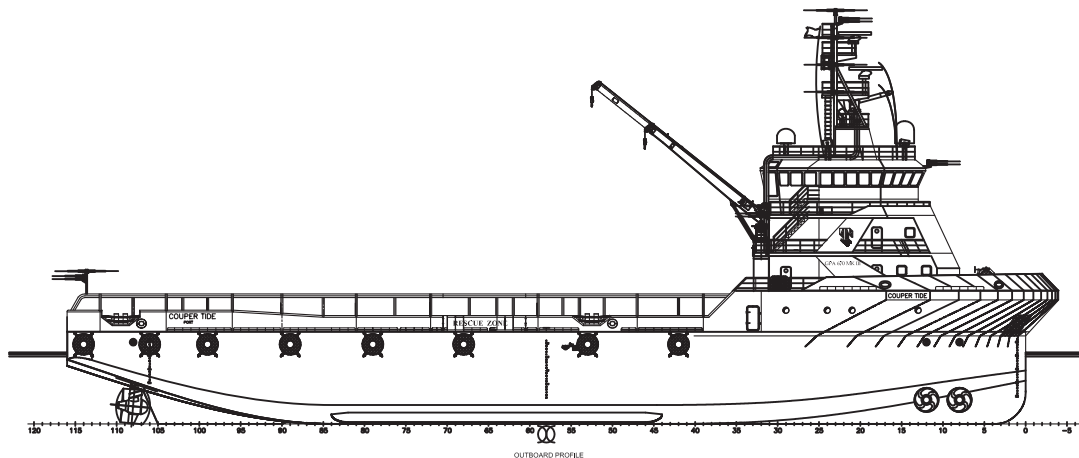
Nav/Comms Equipment

Radar(s):	2
Depth Sounder:	1
Gyro Compass:	3
Wind Speed Indicators:	2
Doppler Log:	1
Radio:	2 x VHF; 1 x SSB
Sat Com:	2XINMARSAT-C / 1XIRIDIUM

Special Equipment

Firefighting:	FiFi-1
Dynamic Positioning:	DP-2
Ref. Systems:	2 x MRU; 2 x DGPS 1 x Laser-based
Water Maker:	1X16 T/DAY / 1X30T/DAY
Mud Mixers:	Yes
Tank Cleaning:	Yes
Rescue Boat:	6MAN SOLAS APPROVED
Reefer Sockets:	2x 220V 20A; 2x 440V 32A
Misc:	MSD-4.66m ³ /DAY

*Approximate values assuming Ideal Conditions





Tank	Contents	Volume m ³	Base Oil	Fuel Oil	Dry Bulk	DW/WB	Potable Water	Fresh Water	Brine	Liquid Mud	Methanol	Lube Oil	Foam	Oil Disp.
DW/WB FP Tk C	DW/WB	38.9				38.9								
DW/WB No. 1 S	DW/WB	78.9				78.9								
DW/WB No. 1 P	DW/WB	87.3				87.3								
DW/WB No. 2 S	DW/WB	42.7				42.7								
DW/WB No. 2 P	DW/WB	42.7				42.7								
DW/WB AP Tk C	DW/WB	100.2				100.2								
Anit-Roll Tank	DW/WB/FW	351.4				351.4		351.4						
FW 1 P	Ships FW	50.8					50.8							
FW 1 S	Ships FW	50.8					50.8							
FW 2 P	FW	11.9						11.9						
FW 2 C	FW	44.4						44.4						
FW 3 P	FW	73.2						73.2						
FW 3 C	FW	145.6						145.6						
FW 3 S	FW	73.2						73.2						
FO DB 1 S	FO	40.8		40.8										
FO DB 1 P	FO	40.8		40.8										
FO 2 S	FO	113.7		113.7										
FO DB 2 C	FO	44.0		44.0										
FO 2 P	FO	115.9		115.9										
FO 3 S	FO	150.0		150.0										
FO DB 3 C	FO	55.0		55.0										
FO 3 P	FO	150.0		150.0										
FO 4 S	FO	91.6		91.6										
FO DB 4 C	FO	36.7		36.7										
FO 4 P	FO	91.6		91.6										
FO DB 5 C	FO	35.4		35.4										
FO Overflow	FO	21.6		21.6										
FO Settling Tk S	FO	27.4		27.4										
FO Settling Tk P	FO	27.4		27.4										
FO Day Tk S	FO	18.5		18.5										
FO Day Tk P	FO	18.5		18.5										
Em. Gen Tk	FO	3.8		3.8										
Liq. Product 1 S	LM	99.0								99.0				
Liq. Product 1 P	LM	99.0								99.0				
Liq. Product 1 C	LM	92.8								92.8				
Liq. Product 2 S	LM	99.0								99.0				
Liq. Product 2 P	LM	99.0								99.0				
Liq. Product 3 S	LM	99.0								99.0				
Liq. Product 3 P	LM	99.0								99.0				
Liq. Product 4 S	LM	99.0								99.0				
Liq. Product 4 P	LM	99.0								99.0				
Liq. Product 5 S	LM/BO	99.0	99.0							99.0				
Liq. Product 5 P	LM/BO	99.0	99.0							99.0				
LO BT Tk P	LO	5.8										5.8		
ME LO P	LO	5.8										5.8		
Lube Oil Tk	LO	5.8										5.8		
Foam Tk S	Foam	19.3											19.3	
Detergent Tk P	Oil Disp.	19.3												19.3
Dry Bulk 2 C	Dry Bulk	63.7			63.7									
Dry Bulk 3 C	Dry Bulk	63.7			63.7									
Dry Bulk 4 C	Dry Bulk	63.7			63.7									
Dry Bulk 5 C	Dry Bulk	63.7			63.7									
Total Volume [m ³]			198.0	1,082.5	254.9	742.1	101.6	699.7	0.0	1,083.0	0.0	17.5	19.3	19.3
Spec Sheet Total Volume [m ³]			198.0	1,020.2	254.9	390.6	101.6	699.7	0.0	1,083.0	0.0	17.5	19.3	19.3

- *Capacities shown are for lead vessel. Actual capacities may vary slightly.
- *Capacities shown in **RED** are excluded from the total volume.
- *Capacities shown in **BLUE** are included in another Tank's Capacity.
- *Capacities shown in **GREEN** are counted for multiple Tank Capacities.

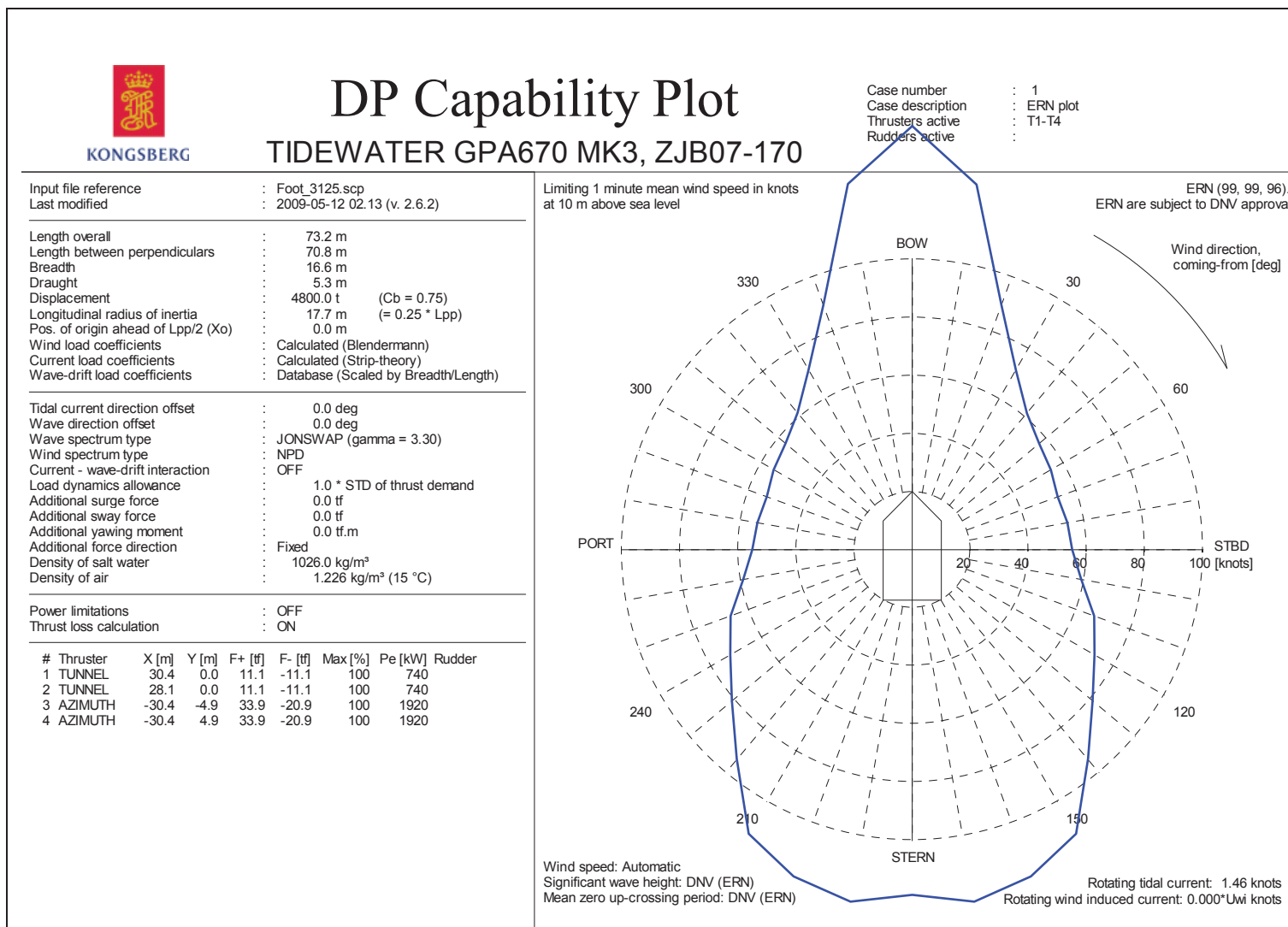


Figure 10: DP capability envelope for case 1.