

PACIFIC VICTORY



PACIFIC VIXEN as shown, PACIFIC VICTORY similar

IMT 966 AHTS

Vessel Characteristics

Length, Overall:	216.5 ft	66 m
Beam:	52.5 ft	16 m
Depth:	24 ft	7.3 m
Maximum Draft:	20.3 ft	6.2 m
Freeboard:	3.6 ft	1.1 m
Displacement:	4,520 lt	4,590 mt
Deadweight:	2,270 lt	2,300 mt
Clear Deck Space:	107 x 42 ft	33 x 13 m
Clear Deck Area:	3,930 ft ²	360 m ²
Deck Strength AFT:	1,020 lb/ft ²	5 t/m ²
Class Notations:	DNV: +1A, Fire fighter(I), Offshore service vessel(Anchor handling, Towing), DYNPOS(AUTR), EO, LFL(2)	

Capacities

Deck Cargo:	860 lt	870 t
Fuel Oil:	299,000 gal	1,130 m ³
Potable Water:	120,000 gal	460 m ³
Drill/Ballast Water:	177,000 gal	670 m ³
Bulk Tanks (4 tanks):	6,530 ft ³	180 m ³
Liquid Mud (2.5 SG*):	2,920 bbl	460 m ³
<small>*Max Structural Specific Gravity</small>		
Methanol:	650 bbl	100 m ³
Brine:	780 bbl	120 m ³
Oil Dispersant:	2,550 gal	9.6 m ³
Fire Fighting Foam:	480 gal	1.8 m ³

TIDEWATER

Find out more

tdw.com

Pg.2 Further Specifications
Pg.4 General Arrangement

Pg.5 Capacity Table
Pg.6 DP Capability Plot

NOTICE: The data contained herein is provided for convenience of reference to allow users to determine the suitability of the Company's equipment. The data may vary from the current condition of equipment which can only be determined by physical inspection. Company has exercised due diligence to insure that the data contained herein is reasonably accurate. However, Company does not warrant the accuracy or completeness of the data. In no event shall Company be liable for any damages whatsoever arising out of the use or inability to use the data contained herein.



Machinery

Main Engines (2):	MAN 9L27/38		
Total HP:	8,810		
Propellers (2):	MAN CPP		
Gears (2):	MAN		
Kort Nozzles:	2		
Rudders (2):	HI-LIFT FLAP RUDDERS		
Primary Generators (1):	270 kw	440 v	60 hz
Driven by:	CAT 3406		
Secondary Generators (2):	1,280 kw	440 v	60 hz
Driven by:	MAIN ENGINES		
Emergency Generators (1):	270 kw	440 v	60 hz
Driven by:	CAT 3406		
Bow Thruster (2):	BRUNVOLL FU-63-LTC-1550		
Driven by:	600KW ELECTRIC MOTORS		
Total Thrust:	20.1 st	18.2 mt	
Stern Thruster (2):	BRUNVOLL FU-63-LTC-1550		
Driven by:	600KW ELECTRIC MOTORS		
Total Thrust:	20.1 st	18.2 mt	

Performance*

Fuel Consumption Vs Speed		
Maximum:	271 m ³ /day (300 gph) @ 13 knots	
Cruising:	20.7 m ³ /day (230 gph) @ 11 knots	
Economical:	15 m ³ /day (170 gph) @ 10 knots	
Standby:	1.3 m ³ /day (14.3 gph) @ 0 knots	
Bollard Pull	130 st	120 mt
Transfer Rates		
Fuel Oil:	440 gpm @ 230 ft	100 m ³ /h @ 71 m
Potable Water:	660 gpm @ 230 ft	150 m ³ /h @ 71 m
Drill/Ballast Water:	660 gpm @ 230 ft	150 m ³ /h @ 71 m
Bulk:	27.3 cfm @ 190 ft	46.3 m ³ /h @ 57 m
Liquid Mud:	330 gpm @ 600 ft	75 m ³ /h @ 180 m
Brine:	330 gpm @ 600 ft	75 m ³ /h @ 180 m

Tow/Anchor Handling

Winch:	Double Drum Winch (320T Brake)
Model:	Hydrakraft/Odim 250T Waterfall
Line Pull:	250 mt
Tow/AH Wire:	1,500 m / 1,500 m of 71 mm
Pennant Reels (2):	1,500 m of 71 mm
Shark Jaw:	2 X 300 T SWL
Tow Pins:	2 X 160 T SWL
Chain Lockers (1):	2,400 m of 76mm chain
Chain Handler:	1X76MM + 1X84MM
Stern Roller:	RRM SINGLE DRUM (2 X 5.5 M); 400 mt SWL
Misc. Tow Equipment:	1xSpare Store Reel 1000m x 76mm; 1x200 t Smit Towing Bracket

Nav/Comms Equipment

Radar(s):	2
Depth Sounder:	1
Gyro Compass:	3
Wind Seed Indicators:	3
Doppler Log:	1
Radio:	2 x VHF; 1 x SSB
Sat Com:	2 X INMARSAT C

Accommodations

No. of Berths:	30
Cabins:	8x1-man, 3x2-man & 4x4-man
Certified to Carry:	30
Galley seating:	14
Hospital:	Yes

Deck Equipment

Anchors (2):	2100 KG
Anchor Chain:	440 m of 36 mm chain per side
Windlass:	10T Hydrakraft
Crane (1):	5 t @ 13 m
Capstans (2):	10 t HYDRAKRAFT
Tugger (2):	10 t HYDRAKRAFT

*Approximate values assuming Ideal Conditions



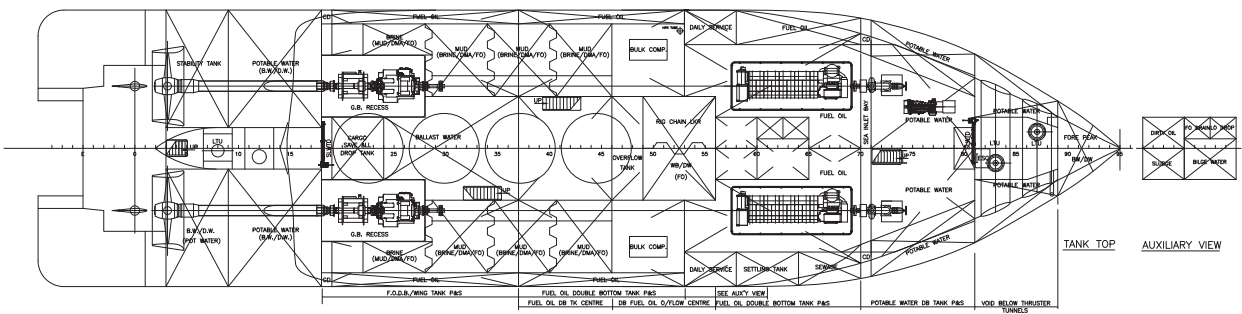
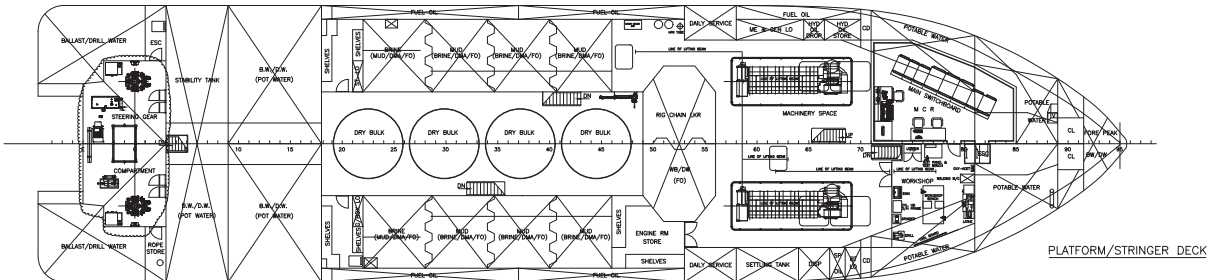
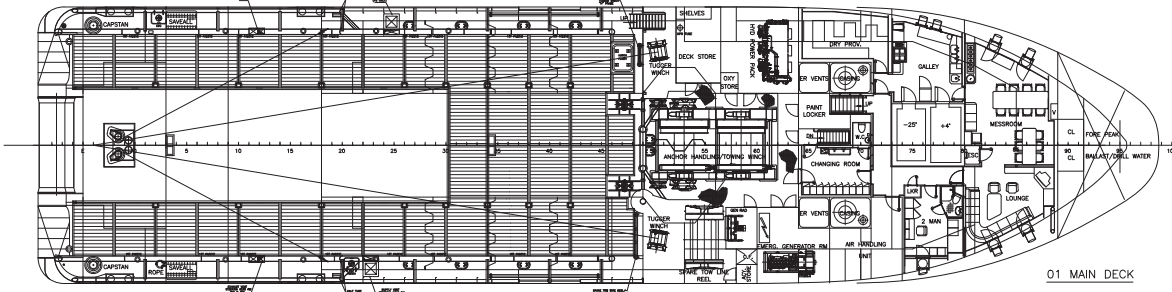
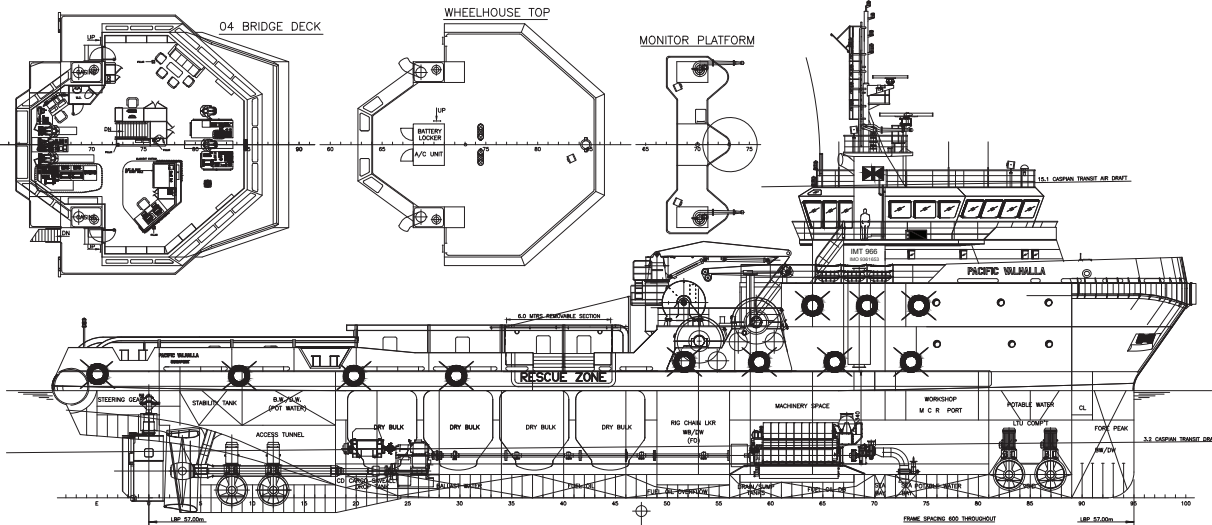
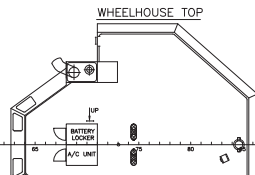
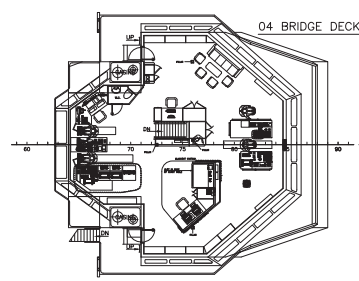
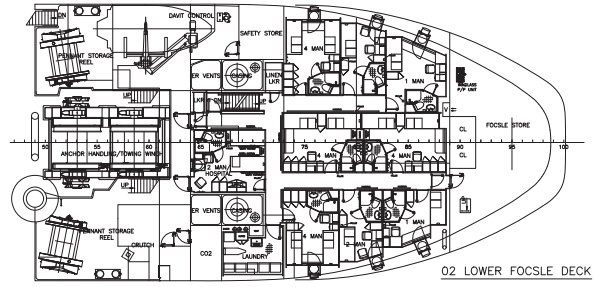
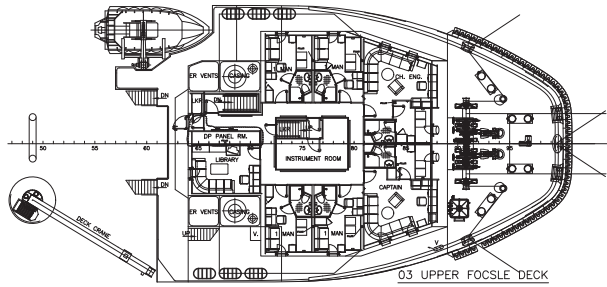
Registration

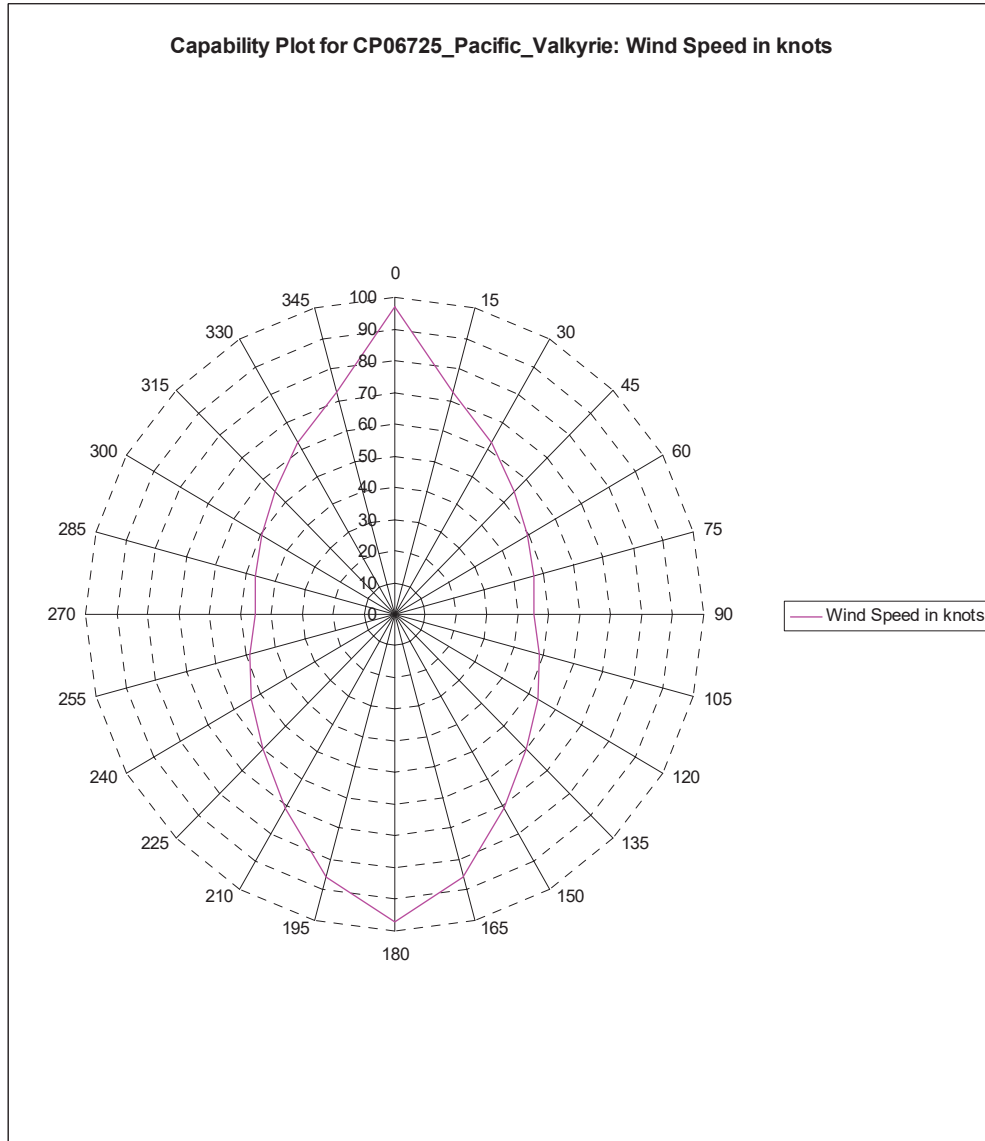
Flag: SINGAPORE	Home Port: SINGAPORE	
Hull Number: 165	IMO N°: 9361677	
Year Built: 2008	Call Sign: 9V6793	
Builder:	PT. Nanindah Mutiara Shipyard	
Tonnage (ITC):	2147 GT	644 NT

Special Equipment

Fire Fighting:	FIFI-1
Dynamic Positioning:	DP-2
Ref. Systems:	3 x MRU; 2 x DGPS 1 x Laser-based
Mud Circulation System:	Yes
Rescue Zone:	Yes
Rescue Boat:	Maritime Partner MP660 Springer, 10 Persons
Reefer Sockets:	6x 440V 63A 3ph
Misc:	MSD; HiPAP Ready; ROV Sockets: 2x500A, 440V, 3ph; 1x63A, 440V, 3ph; 1x32A, 440V, 3ph

*Approximate values assuming Ideal Conditions





Wind Angle is stepped from 0 to 360 deg.
 Wave Angle is stepped from 0 to 360 deg.
 Current Angle is stepped from 0 to 360 deg.

Wind Speed is Set Automatically.
 Wave Height is Derived from Wind Speed.
 Current Speed is 1.5 knots.

