

IGIRAN TIDE



STAN TUG 2309

Vessel Characteristics

| | | |
|-------------------|----------------------------------------------------------|--------------------|
| Length, Overall: | 74.2 ft | 22.6 m |
| Beam: | 28.5 ft | 8.7 m |
| Depth: | 12.5 ft | 3.8 m |
| Maximum Draft: | 9.5 ft | 2.9 m |
| Minimum Height: | 32.8 ft | 10 m |
| Freeboard: | 3 ft | 0.9 m |
| Displacement: | 300 lt | 300 mt |
| Deadweight: | 60 lt | 60 mt |
| Clear Deck Space: | 27 x 18 ft | 8.1 x 5.5 m |
| Clear Deck Area: | 480 ft ² | 45 m ² |
| Deck Strength: | 410 lb/ft ² | 2 t/m ² |
| Class Notations: | BUREAU VERITAS: I +HULL MACH TUG UNRESTRICTED NAVIGATION | |

Capacities

| | | |
|---------------------|-----------|---------------------|
| Deck Cargo: | 20 lt | 20 t |
| Fuel Oil: | 6,630 gal | 25.1 m ³ |
| Potable Water: | 2,540 gal | 9.6 m ³ |
| Oil Dispersant: | 400 gal | 1.5 m ³ |
| Fire Fighting Foam: | 770 gal | 2.9 m ³ |

TIDEWATER

Find out more

tdw.com

Pg.2 Further Specifications

Pg.3 General Arrangement



Machinery

| | | | |
|--------------------------------|--------------------------|-------|-------|
| Main Engines (2): | CAT 3512C TA / B | | |
| Total HP: | 2,820 | | |
| Propellers (2): | Kaplan II FPP 2200mm Dia | | |
| Kort Nozzles: | 2 | | |
| Primary Generators (2): | 58 kw | 400 v | 60 hz |
| Driven by: | CAT C4.4 | | |

Performance*

| | |
|----------------------------------|------------------------------------------------|
| Fuel Consumption Vs Speed | |
| Maximum: | 8.7 m ³ /day (95.8 gph) @ 9.1 knots |
| Economical: | 2.6 m ³ /day (28.6 gph) @ 6.2 knots |
| Standby: | 1.7 m ³ /day (18.7 gph) @ 0 knots |
| Bollard Pull | 39.2 st 35.6 mt |

Deck Equipment

| | |
|----------------------|---------------------------------|
| Anchors (1): | 255 KG HYT-12 HHP Anchor |
| Anchor Chain: | 160 m of 17.5 mm chain per side |
| Windlass: | 2 MT DMT AW-200-E17.5K2 |
| Crane (1): | 1.7 t @ 10.6 m |
| Capstans (2): | 10 t CE-100KN @ 15M/MIN |

Registration

| | |
|----------------------------|-----------------------------------|
| Flag: LIBERIA | Home Port: MONROVIA |
| Hull Number: 509505 | IMO N^o: 9958511 |
| Year Built: 2023 | Call Sign: YJXM5 |
| Builder: | DAMEN SHIPYARDS |
| Tonnage (ITC): | 157 GT 47 NT |

Tow/Anchor Handling

| | |
|----------------------|----------------------------|
| Stern Roller: | 1.5m x 0.7m DIA; 30 mt SWL |
|----------------------|----------------------------|

Nav/Comms Equipment

| | |
|------------------------------|------------------|
| Radar(s): | 1 |
| Depth Sounder: | 1 |
| Gyro Compass: | 1 |
| Wind Speed Indicator: | 1 |
| Radio: | 2 x VHF; 1 x SSB |
| Sat Com: | INMARSAT-C |

Accommodations

| | |
|----------------------------|----------------------------|
| No. of Berths: | 8 |
| Cabins: | 2x1-man, 1x2-man & 1x4-man |
| Certified to Carry: | 8 |
| Galley seating: | 7 |

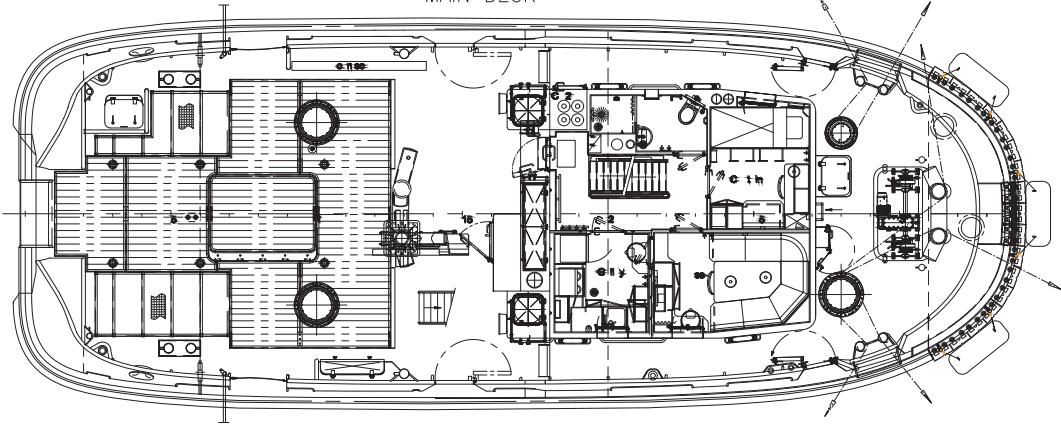
Special Equipment

| | |
|----------------------------------|-----------------------------------------------------------------------------------------------|
| Firefighting: | 2x 300 m ³ /hr Fire Monitors |
| Oil Dispersant Equipment: | 2x Dispersant Booms |
| Misc: | *Fuel shown for ship's use only.; Propeller Guards; Dacon Scoop PS; 2x Capstans FWD - 5T, 10T |

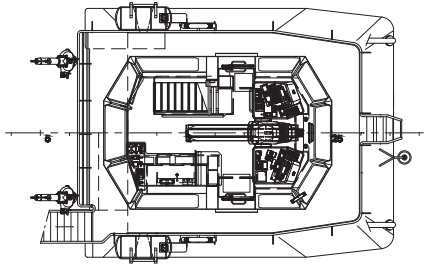
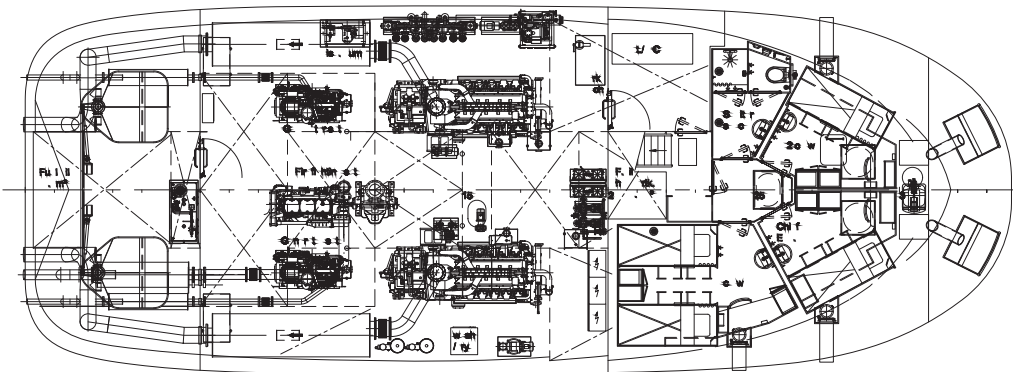
*Approximate values assuming Ideal Conditions



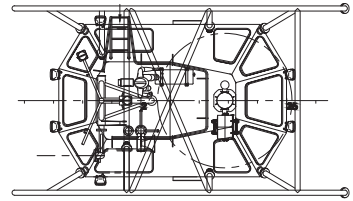
MAIN DECK



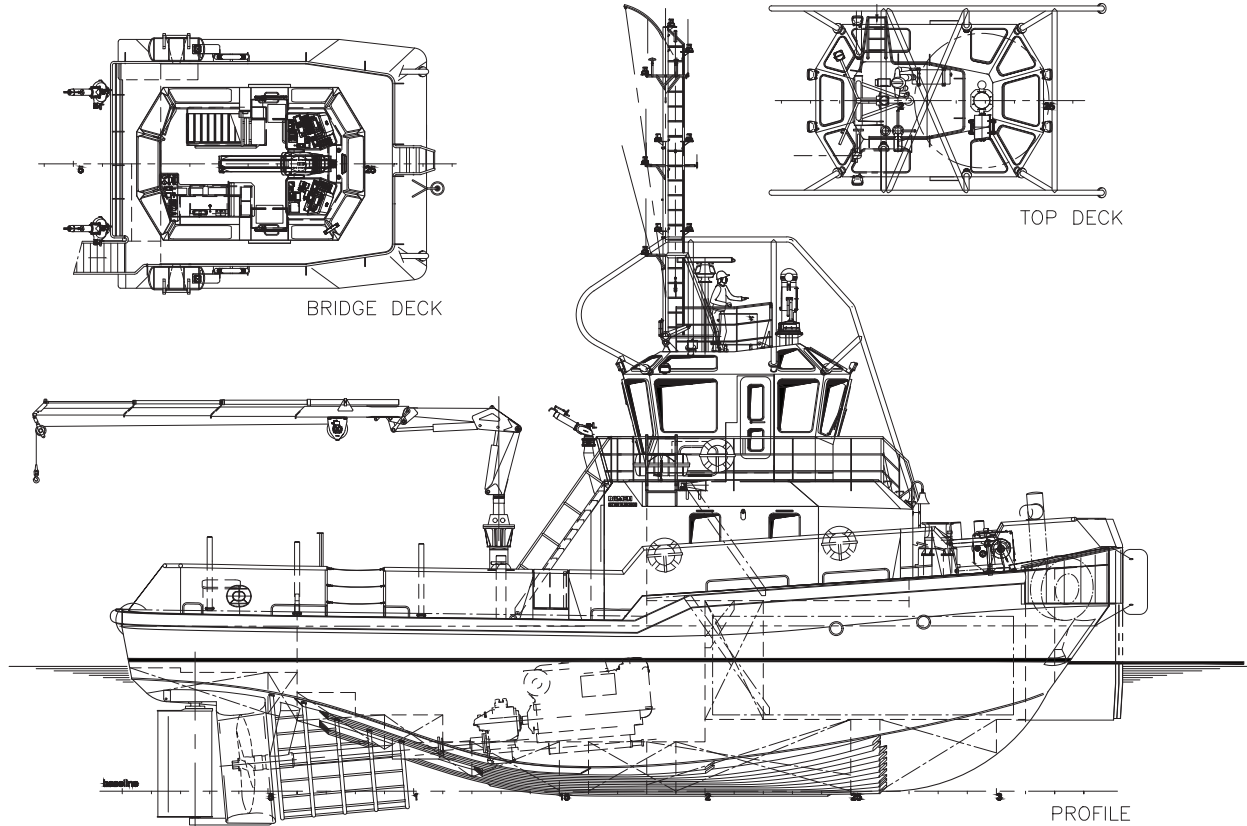
BELOW MAIN DECK



BRIDGE DECK



TOP DECK



PROFILE